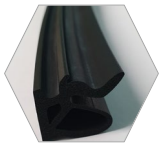
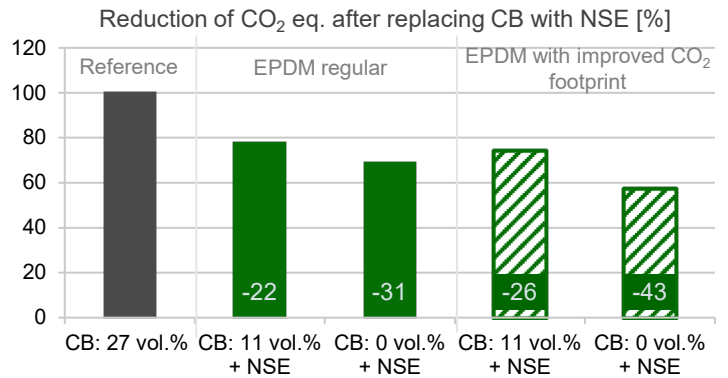




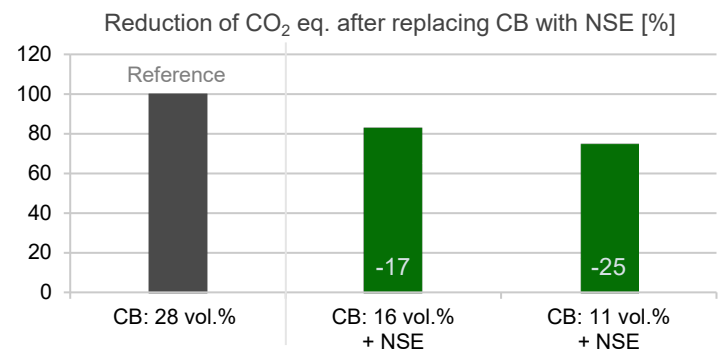
### General example – EPDM profiles

in phr	CB	NSE	
EPDM: regular or with improved CO <sub>2</sub> footprint	100	100	100
Plasticizer	65	65	65
<b>Carbon black (CB)</b>	<b>135</b>	<b>60</b>	-
<b>Neuburg Siliceous Earth (NSE)</b>	-	<b>155</b>	<b>200</b>
<i>Carbon black [vol.%]</i>	<i>27</i>	<i>11</i>	<i>0</i>



### Foamed EPDM car body seal

in phr	CB	NSE	
EPDM	100	100	100
Plasticizer	20	20	20
<b>Carbon black (CB)</b>	<b>110</b>	<b>70</b>	<b>50</b>
<b>Neuburg Siliceous Earth (NSE)</b>	-	<b>120</b>	<b>180</b>
<i>Carbon black [vol.%]</i>	<i>28</i>	<i>16</i>	<i>11</i>



### FKM filled with hollow glass microspheres (HGM)

in phr	CB	HGM
Viton GAL-200S	100	100
Zinkoxyd aktiv	3	3
TAIC-70	4.3	4.3
Trigonox 101-50D-pd	2	2
<b>Carbon black N 990 (CB)</b>	<b>30</b>	<b>12</b>
<b>Functionalized 3M™ hollow glass microspheres</b>	-	<b>12</b>

